



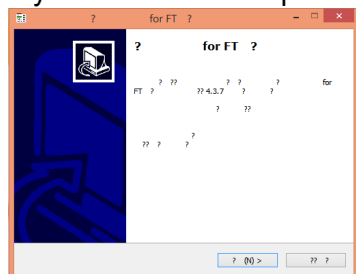


Installing the software

Please read this trouble shooting manual before installing the data logger software. Since FtJr data logger support two language (Japanese and English), you have to change the language to English from PC language setting. Otherwise you may not be able to read the instruction while installing data logger software.

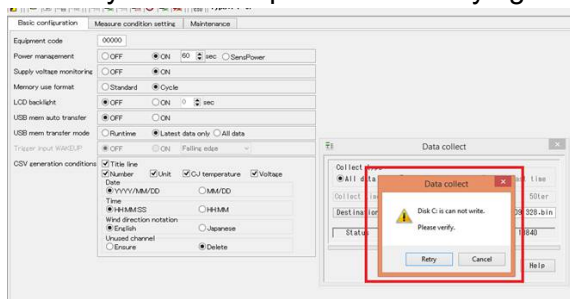
1. Change the PC language to English. (Please ignore If your PC already set to English.)
select start  > Setting  > Time & Language > Language(Choose a language from the Windows display)
You will find English so please select English then Data Logger software will display in English.
2. Download the installation file from our website. (<https://environment.co.jp/en/lai-leaf-area-index-analyzer>)
Click the download button  located at bottom of the web page.
3. Open the zip file and click setup  setup.exe
4. Connect the data logger (Please see FtJr instruction manual in the driver zip file)

If you see like below picture (garbled text). This is because you have not set the language to English on your PC.



Data collecting denied or not working?

You may see below picture that denying collecting data from device to PC. If it happens, please follow below steps.

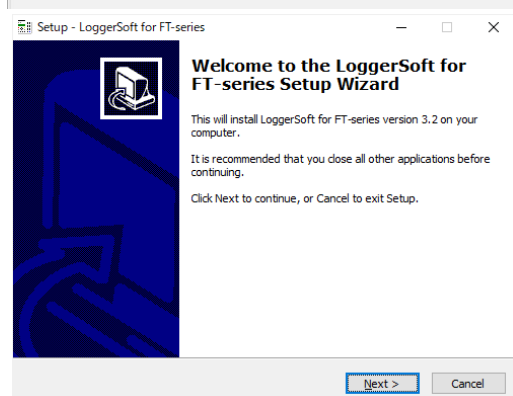


Please uninstall software and reinstall as follow.

Step1. Uninstall Software.

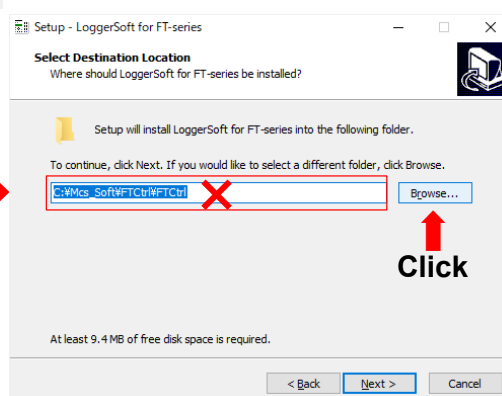
Step2. Reinstall Software. **NOTE**

If your folder name is appears as **C:\Prgogram Files (x86)\Mcs_Soft\FTCtrl** do not chose this. **Browse and find the C:\Mcs_Soft\FTCtrl.**

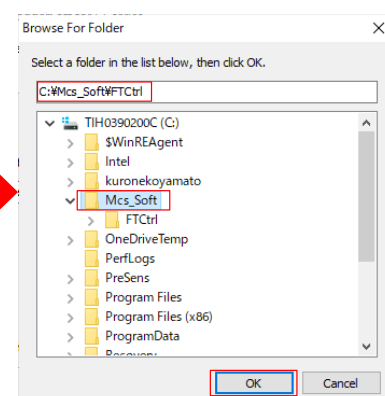


Reinstall Software.

Now you installed file at right place and you should be able to collect data.



Before click Next, please click Browse..



Choose Mcs_Soft then click OK.

Data transferring to USB

When trying to download data via USB interface, data transferring will be stuck.

When the USB memory is large, it can take a long time to search for information such as usage status, and FTJr's internal processing may time out, causing the process to stop midway.

This problem often occurs when there are a large number of files on the USB memory.

Thus please use Maximum 32G capacity and please only use for Ftjr data logger and please keep empty the USB memory when using another measuring site.

We recommend to use cable to transfer data.

Avoid rain

Some customers use MIJ-15LAI/P rainy day but it will lead break the data logger since FtJr Data logger is not waterproof. Please do not use under the rain condition.

If you plan to use MIJ-15 LAI sensor for measuring annually then we strongly suggest you to choose MIJ-15 LAI/K2 and prepare proper data logger with waterproof box. If you have not sure which data logger you need to prepare then we can advice so please contact us or just choose our data logger MIJ-01 and waterproofcase.