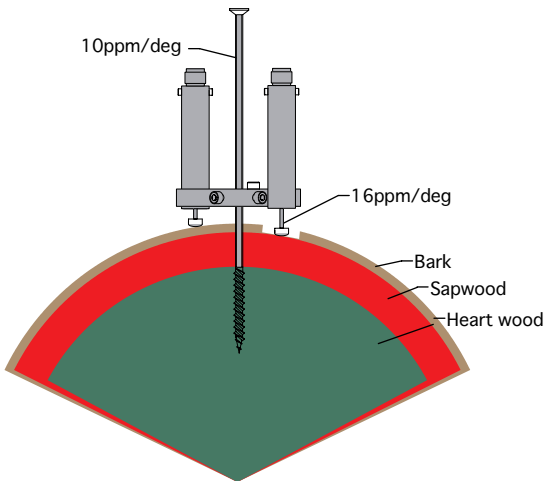


MIJ-02 Series Dendrometer

MIJ-02 LM (Absolute Linear)



Feature

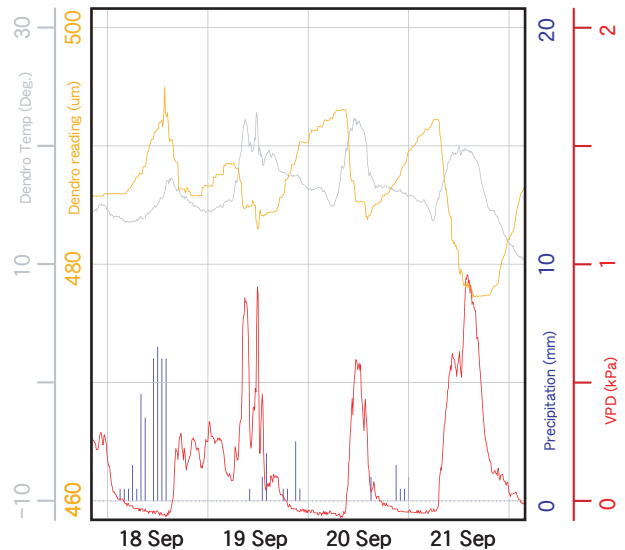
Basically, target is the tree stem but by adjusting the securing bracket and spring rate will be able to measure thin branch, fruit, crops and etc.

Read daily expansion and contraction

Reduced thermal characteristic to the limit by offsetting the linear thermal expansion coefficient of shaft and fixed nail.

Avoid the thermal characteristic of potentiometer by using ratiometric output

Minimum friction help to setting spring constant low



MIJ-02 LM Type2 can measure with less than 0.1um resolution and also be able to analyze process of sapwood shrinks occur from sapflow and relation with sapwood pressure potential. As annual changes, individual carbon fixation and production from individual live tree will be the direct index which can lead estimation of whole canopy value.

Specification

Measurement Range	11000um
Resolution	2.2um/mV
	(MIJ-01:0.22um, MIJ-12: 2.2um)
Regression equation (Output)	$dL=11000 * V_{out} / V_{pre}$
	dL: displacement (um), V_{out} : voltage output, V_{pre} : preheat voltage
	(MIJ-01: $dL=11000 * X001 / 5000$ input to Physical Value Setting)
Preheat	5VDC (5mA at 5VDC)
Withstand Voltage	>18VDC
Sliding Resistance	>0.3N (Not including spring)
Linearity	<1%
Thermal characteristic	-0.126um/DEG
Waterproof	IP67
Size	Length:99.3mm (not include cable length)
Diameter	Diameter : 16mm
Weight	30g (Not include cable)