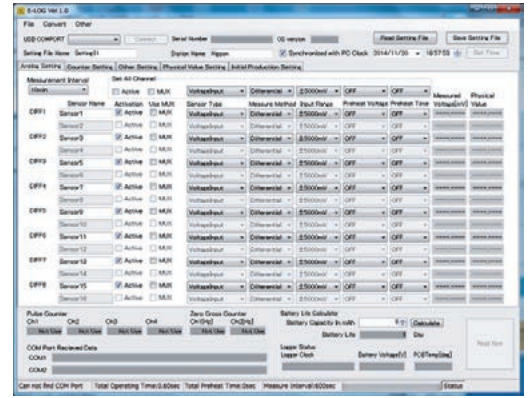
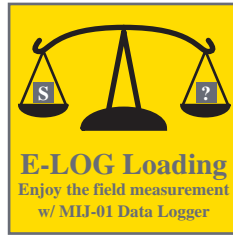
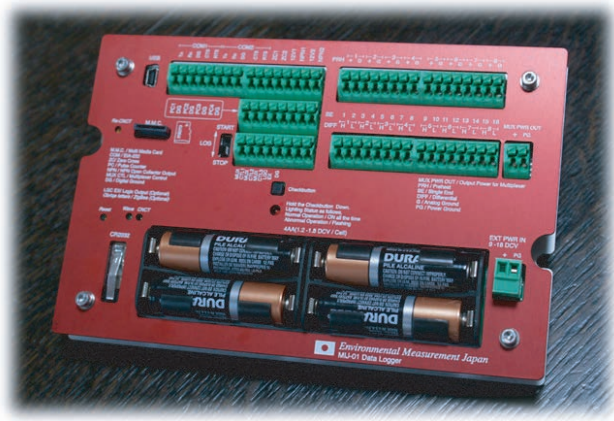


MIJ-01 Data Logger

from Environmental Measurement Japan



Software for MIJ-01 ELOG

<Feature>

- Can work 350 days with mounted 4AA alkaline batteries.
- Individual 8 Ch.150mA capacity pre-heat output (Excitation out put for drive many kind of sensors.)
- Analog inputs of DIFF8ch (SE16ch) Equipped with zero-crossing 2ch, rain gauge pulse 4ch and RS232C /2ch
- 5ppmTCXO is used for time stamp. And additional calibration was done using satellite 1pps pulse at factory calibration
- 24 bit AD converter (effective 18bit).
- Mounted Micro SD Memory card slot. No need think about memory limit.
- Software E-LOG make easy logger operation. Free download without authentication.
- External power supply accept DC12V many kind of batteries
- Connection to the PC require USB cable supplied with MIJ-01. Unnecessary, such as serial conversion cable.
- Spread JPN passport sized. Easy installation to Pelican1120 water proof box(Optional or user can buy everywhere.).

< Specification>

Production Name	MIJ-01	
Input range	Resolution	Error rate
DIFF ± 5000 mV	0.01mV	$\pm 0.02\%$ F.S.
SE 0 to +5000mV	0.01mV	$\pm 0.03\%$ F.S.
DIFF ± 1250 mV	0.01mV	$\pm 0.05\%$ F.S.
SE 0 to +1250mV	0.01mV	$\pm 0.05\%$ F.S.
DIFF ± 15 mV	0.1micro V	$\pm 0.04\%$ F.S.
SE 0 to +62.5mV	0.1micro V	$\pm 0.04\%$ F.S.
Temperature measurement	On-board IC thermistor + aluminum block for cold junction. Accept T and K type thermocouple. 1.0 °C of precision	
Built-in clock	TCXO crystal oscillator ± 5 ppm ± 158 seconds per year (-40 to 85 degree), ± 120 seconds per year (-10 to 60 degree)	
Accuracy of DC measurement	After our calibration based on 1pps from GPS, ± 30 seconds per year (-10 to 60 degree)	
Number of Analogue input	$\pm 0.016\%$ (calibration base line was made by YOKOGAWA GS200 and checked by Keithley2002.)	
Number of pre heat output	DIFF/8ch. (SE/16ch)	
Pre-Heat capacity	8 ch (DC12, 5 and 2.5V selectable with ELOG), Independent pre heat terminal for each DIFF ch.	
Number of pulse input	150mA/ch	
Number of Zero cross inputs	4ch Used for rain gauge. (less than 20 Hz)	
Number of serial input	2ch Used for anemometers (Accept Generator type, but less than 15V)	
External battery input	2ch (RS232C Tx,Rx,DG,CTS,RTS)	
Program memory	accept 9 to 18 DCV	
SD card format	128KB (Microcomputer having it)	
EEP ROM capacity	FAT32	
DC current at sleep mode	32kB (On-board)	
DC current at measurement	Less than 10 μ A	
Working environment	Less than 80 mA (less than 100 mA of memory card writing time)	
Size	Working environment -25 to 60 °C /90%RH non-condensation.(Use waterproof case, desiccant and cable grant at outside installation.)	
Screw position for panel mount	176 x 116 x 28 mm	
Weight	Wide 169 mm offset +30mm (2 of M4 bolts and washer are recommended.See manual.)	
Battery	358g (455g With 4AA alkaline batteries)	
Memory back up battery	4 AA battery (Accept another type but limited 1.2 to 1.8DCV/ cell.) Mounted 4AA work as back up battery when external battery connected.	
Running time	CR2032	
Interval	350 days (Set up for analog 8ch, interval 10 minutes, not use pre heat)	
A/D converter	1, 2, 5, 10, 30 Sec. 1, 3, 5, 10, 15, 30 minutes, 1, 3, 6 hours	
Impedance	24bit (Effective 18 bit)	
Cable size	Over 2MOhm	
Material	AWG24 to 16 (0.52 to 1.29mm)	
Operation manual	RoHS	
	Download from EMJ homepage	

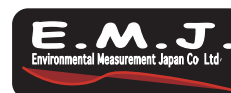


MIJ-01&MUX32/64 in Pelican1120



MIJ-01 176x116mm
Passport (JPN) 176x125mm

Environmental Measurement Japan



2-52-42 Takamidai, Fukuoka-city Higashi-ku,
Fukuoka 811-0215, Japan
e-mail : infoemj@environment.co.jp
TEL : +81-92-608-6412
FAX : +81-92-985-7844
www.environment.co.jp